



## Classic Black Linen Trouser

### Description





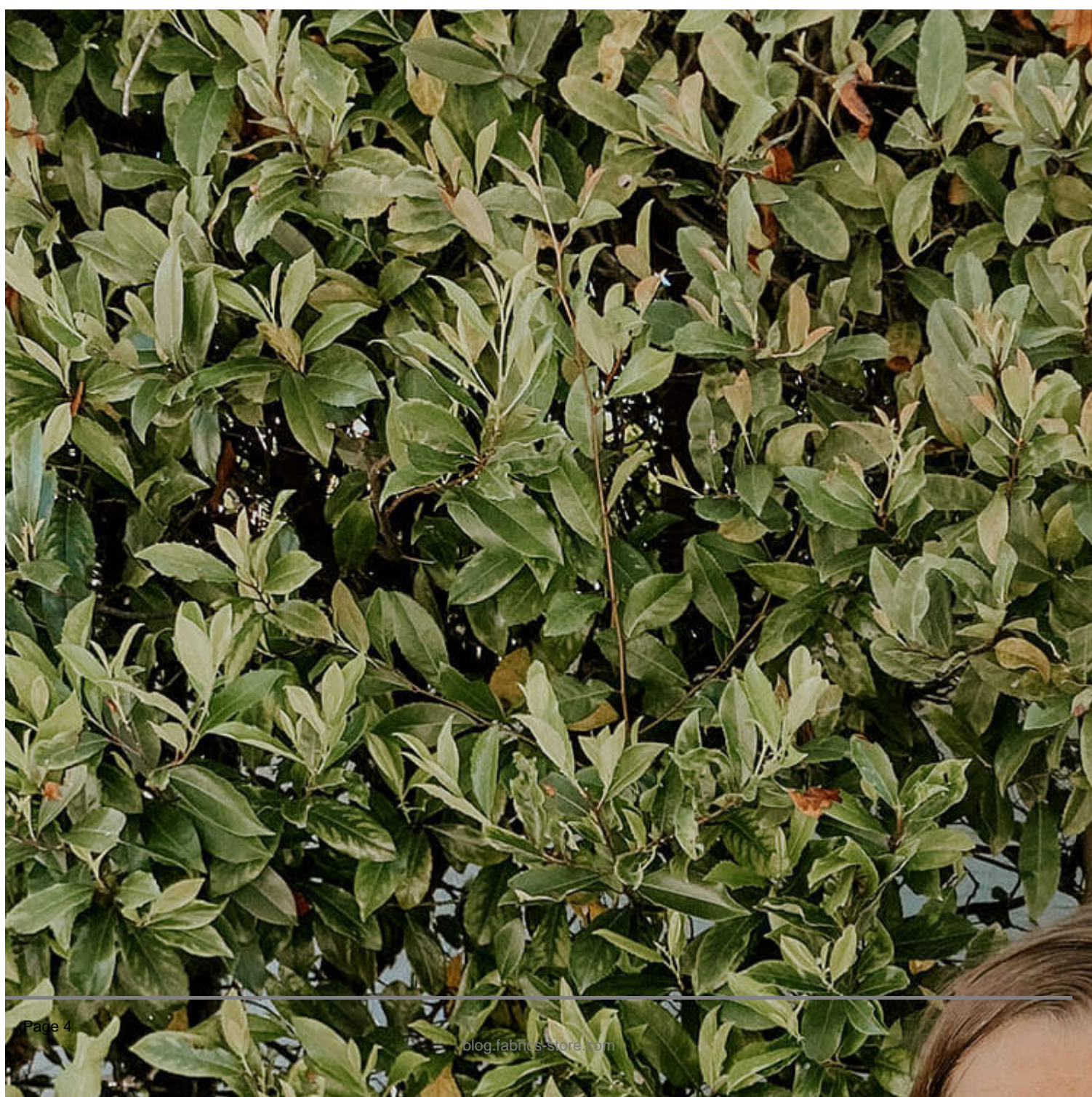


The traditional trouser includes a waistband, belt loops and a fly front but over time I think weâve accepted many variations on this beloved staple garment. Donât misunderstand, I do love cozy elastic waist linen pants as well. Iâve even designed patterns for such a pant and have several but nothing can totally replace the style a classic trouser brings to an outfit. We can find so many online vintage photos of women in classic trousers from the past to inspire our modern outfits for days. They really are a timeless piece.



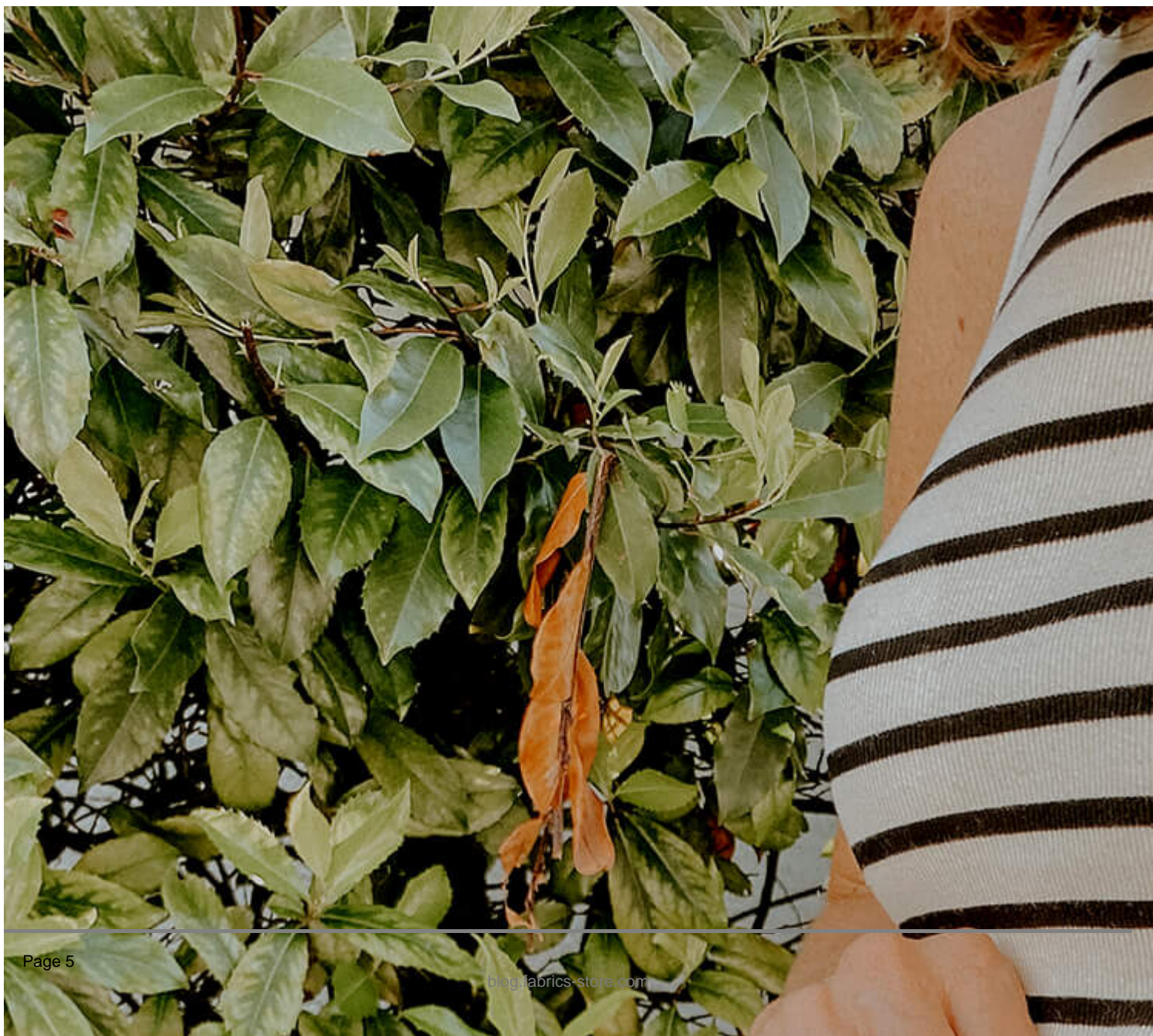


Capsule wardrobes are still quite popular and aim to keep your focus on sustainability, minimalism and reduce over consumption of fashion. When you assess your garments with this goal in mind you really focus on what your life activities and work days look like and what garments you really need from week to week. With this in mind, I really felt like a black classic trouser would go with several of my linen button up tops as well as my tanks and tees. I make almost all of my clothes so I think my âcollectionâ falls at least close to the philosophy of a capsule wardrobe. If you donât have a pattern for a classic trouser, I used the [Riva Pattern](#) with a simple straight back variation on the waist band.





If you'd like some help choosing which fabric weight to use for your trousers, there are a couple things to consider. First, the weather where you'll wear this piece. If your seasons include a bit more cold climate you'll probably want the [7.1 oz](#) which I have used and enjoyed (even here in Florida) but this time I went with [5.3 oz linen](#) which works perfectly for me since I wanted these for a variety of warmer seasons. The great news is that linen has many natural benefits – including being highly absorbent and breathable which is why you see linen worn in so many summer outfits. Having said that, it's also fascinating to know that linen can also be temperature regulating in the winter and help your body retain heat! So you really can't go wrong. The second thing to consider when choosing the weight, might be how flowy or draped you'd like the pant legs. The 7.1 oz would hang a little straighter or heavier and the 5.3 might flow a little more when you walk.



As for the color, you are really on your own with this choice. Have fun, itâs all about your preference. There are just so many great options!! [Our friend Kelsey showed you her bright orange Tangelo pants](#) this summer right here on the blog and [I did a great shorts variation of this same Riva style in bright green Rustic Juniper](#). [Iâve also used Bright Cobalt](#) to add a pop of color in what you might say is a very autumnal wardrobe of mine. You of course have the classic white [Rustic Bleached Premier Finish](#) and now you can debate this lovely [Black Signature Finish](#). Whatever color you choose, I am confident youâll enjoy having made custom classic Riva style trousers fit just for you.

## CATEGORY

1. COMMUNITY
2. PATTERN REVIEWS

## Category

1. COMMUNITY
2. PATTERN REVIEWS

## Date Created

February 22, 2024

## Author

alisha-cooke