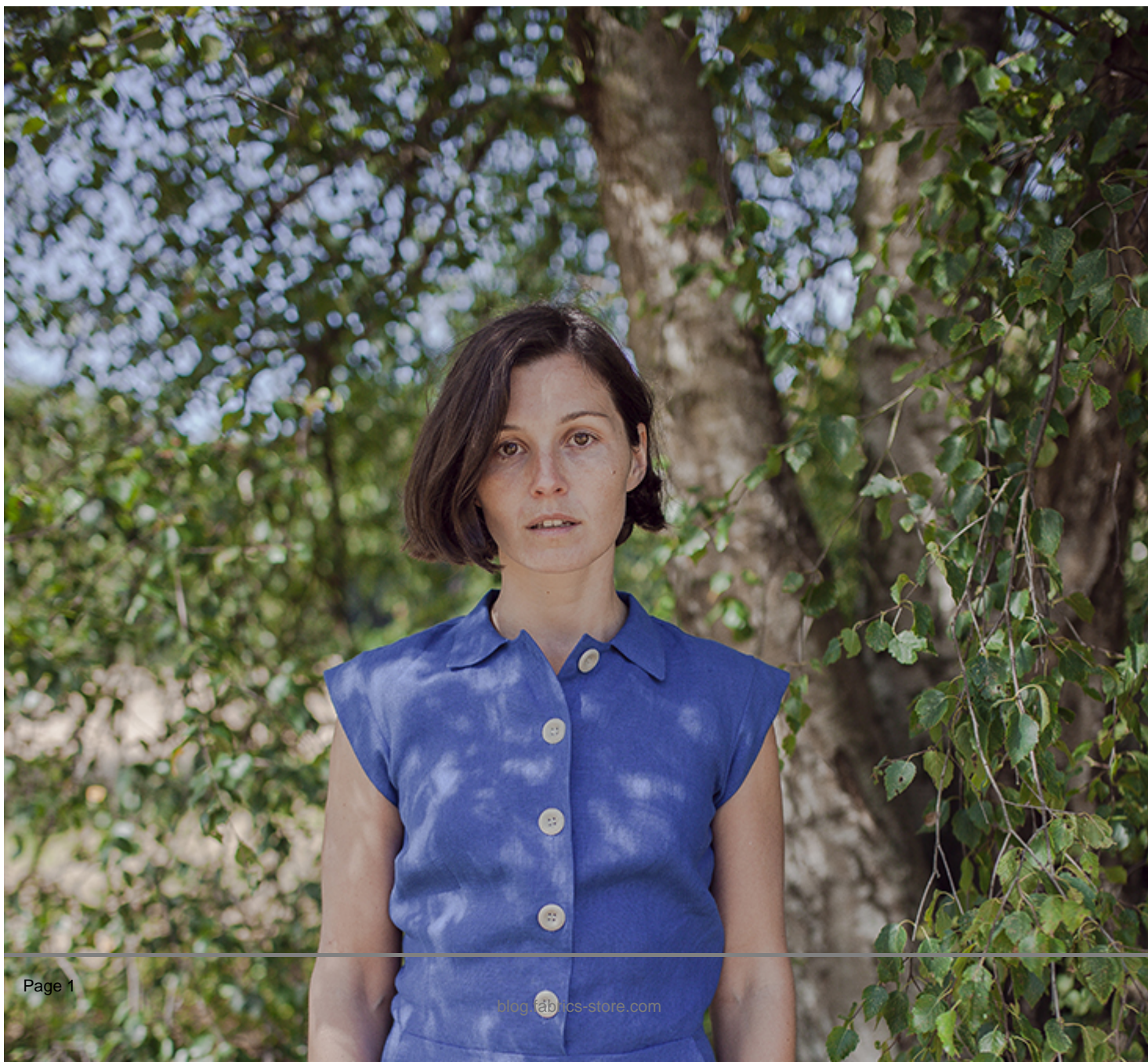




Sloan Fitted Jumpsuit Tutorial and Free Pattern

Description





Want to take the style factor up another notch from just your average jumpsuit? Try our newest sewing pattern – the Sloan jumpsuit! Fitted throughout the body, it hugs your curves at all the right places. Slightly cropped legs, zipper closure, contrasting buttons, cuffed sleeves, and convertible collar – are just a few details that make this style both chic and functional.

The Sloan jumpsuit is the perfect all-in-one outfit with all the ease of a dress, just that much cooler! But the real beauty of this pattern is its versatility – wear it with trainers or heels, all year long, from day to night.

Materials



For our sample US size 6 pictured in this tutorial we used 3 yards of [IL019 ROYAL BLUE Softened Medium Weight Linen](#)

For other sizes, please refer to the yardage table in the PDF pattern to determine the required amount of fabric.

Matching sewing thread, matching invisible zipper (22" long), five large buttons (3/4"-1"), fusible interfacing.

Tools



Scissors, pins, ruler, chalk, measuring tape, fabric marker, buttonhole foot, zipper foot, seam ripper, needle, sewing machine

Difficulty

Intermediate

Sewing Time

8-10 hours

Pattern

You can access the multi-sized printable PDF pattern by following this link [HERE](#). All seam allowances are included and are 3/8" unless otherwise specified. The model is wearing US size 6.

Remember to transfer all the notches onto your fabric.

Steps

Note: Prewash your fabric and tumble dry it until it is still slightly moist, dry at room temperature. Iron the fabric so it is easier to work with.

1. Sew the front waistline darts following the instructions in [this tutorial](#). Press the darts towards the center front.



2. Sew the back waistline darts and press towards the center back.



3. Pin the front and back bodices right sides together at shoulders and stitch at a 3/8" (1 cm) seam allowance. Finish the seams with your preferred method (serge or zigzag the raw edges together) to prevent the fabric from fraying. Press towards the back.



4. Interface the facing pieces and assemble at the shoulders right sides together. Stitch at a $\frac{3}{8}$ " seam allowance and press the seams open, then finish the outer edge of your facing with a serger or a zigzag stitch.



5. Sew the collar pieces right sides together along all edges except the bottom. Trim the seam down to 1/4 and clip the corners to reduce bulk.



6. Turn the collar right side out and press rolling the seam slightly to the inside. Topstitch along all edges except the neckline.



7. Now place your collar on top of your bodice (both right sides facing you), then layer the facing on top (wrong side facing you). Match the shoulder and center back notches and pin all the pieces together along the neckline and front opening.



8. Stitch the pinned edges at a $\frac{3}{8}$ " seam allowance, then grade to $\frac{1}{4}$ and clip the corners.



9. Bring your facing to the inside of the bodice and press. Topstitch along the

outer edges and the neckline.



10. Pin and stitch the right side seam only at a 3/8" seam allowance and finish the raw edges together using your preferred method.





11. Finish the raw edges of the open left side seam. Once we've attached the pant, we'll insert the invisible zipper here. Make sure you don't trim any fabric while serging as you need your full 3/8" seam allowance for the zipper.



12. Sew the buttonholes and attach the buttons to the front opening. For the buttonholes, you can follow our detailed tutorial [HERE](#). As for the buttons, check our tutorial [HERE](#) for instructions. Refer to our PDF pattern for the exact buttonhole placement.

Overlap the bodice and place a pin into the center of each buttonhole. This is where you'll need to attach the button.



13. Lap right front overlap matching the center front notches and aligning the waistline edges. Baste the two in place $\frac{1}{4}$ " from the edge.



Set your bodice aside for now and let's sew the pants. We'll start with the front hip pockets.

14. Take your front pocket pieces, fold them in half right sides together and stitch along the bottom edge at a $\frac{3}{8}$ " (1 cm) seam allowance. Make sure they are mirror images to each other.



15. Trim the seam allowance down to $\frac{1}{4}$ " and turn the fabric right side out. Press and stitch again $\frac{3}{8}$ " from the bottom edge.



16. Pin the diagonal edge of the pockets (wrong side) to the diagonal edge of

the front pieces (right side) and stitch at a 3/8" seam allowance. Remember to backstitch.



17. Trim the seam, turn right side out and press flat. Topstitch 3/8" (1 cm) from the folded edge.



18. Pin the side seams of the pocket to the side seams of your front pieces and baste in place ($\frac{1}{4}$ " from the raw edge).

19. Pin the two front pieces right sides together along the rise and stitch at a $\frac{3}{8}$ " seam allowance. Finish the raw edges together and press towards the left leg.



20. Take your back pant pieces and sew the waist darts following the instructions in [this tutorial](#).

Press the darts towards the center back.



21. Pin and stitch the two back legs right sides together along the rise seam, matching the notches. Finish the raw edges together and press towards the left leg.



22. Pin the front and the back of your pants at the inseam, matching the notches and the crotch seam. Note that the back pant is intentionally $\frac{1}{4}$ " smaller than the front between the two notches. Sew the two together using the standard $\frac{3}{8}$ " (1 cm) seam allowance, stretching the back fabric slightly to fit the front. Finish the raw edges and press towards the back.



23. Now sew the right side seam, finish the raw edges together and press towards the back.



Using your preferred method, finish the raw edges of your left side seam separately to prepare it for the zipper insertion.

24. It's time to assemble the bodice and the pant portion of your future jumpsuit. Pin the two right sides together along the waist, matching the darts and the side seams.



25. Sew the pinned edges at a 3/8" seam allowance and finish raw edges with a serger or a zigzag stitch. Press seam towards bodice.



26. Pin the top of your left side seam and stitch from armpit down to zipper

notch. Remember to backstitch at both ends. Press the seam open.



27. Prepare your zipper by pressing it lightly with iron (use low heat setting) to unroll the teeth. If you've never installed an invisible zipper before, please check our detailed tutorial [here](#) with all the instructions and tips.

Unzip your zipper and pin to left side seam edges right sides together. Place the top of the zipper teeth right at the zipper notch.



28. Put the invisible zipper foot on your machine and stitch both edges of the zipper stopping at the second notch (around the hip area). Remember to backstitch.

Now that you have installed the zipper, sew the remaining edges of the left side seam at a 3/8" seam allowance. Press open.

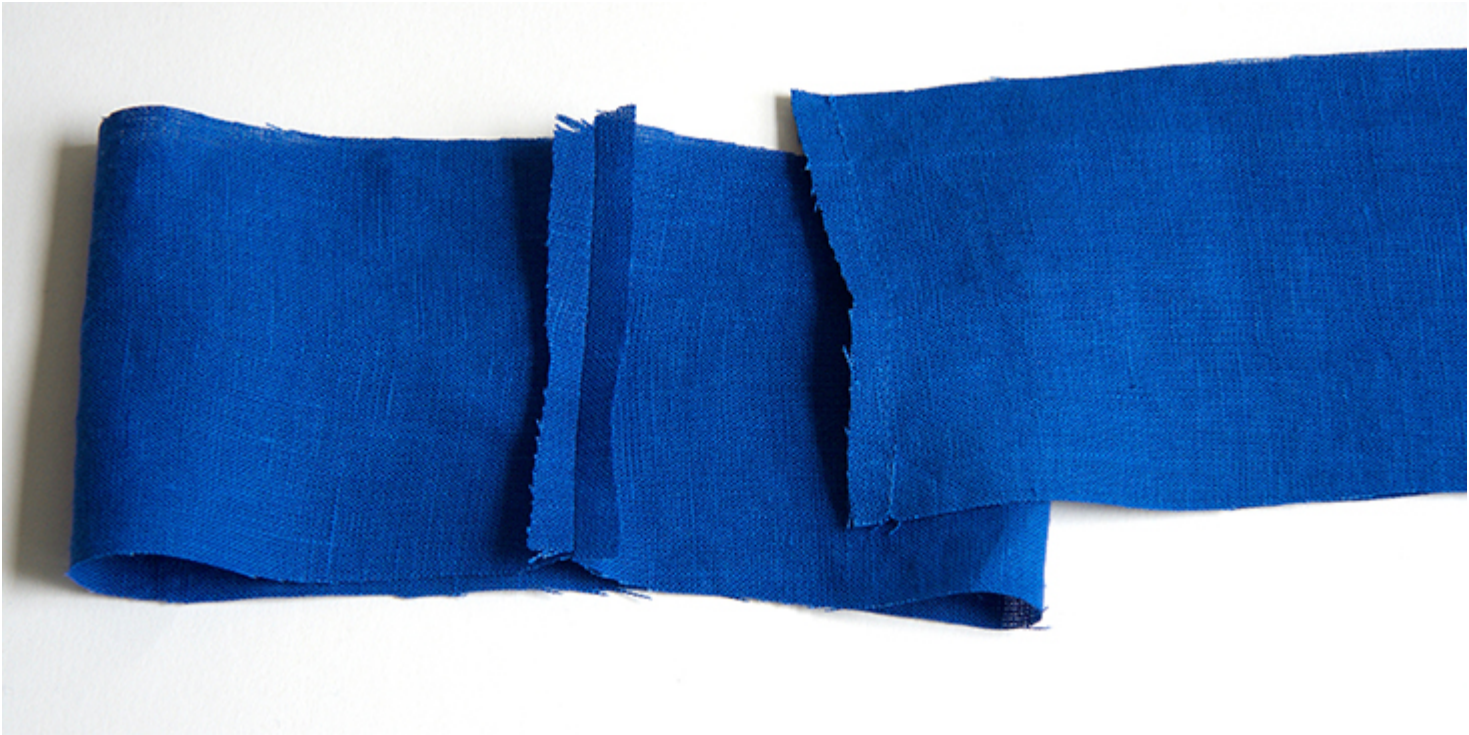


29. Finish the hem with a rolled twice hem. First, fold your fabric $\frac{1}{2}$ " to the wrong side and press, then press another 1" and edgestitch.



Next – the sleeve bands!

30. Pin and stitch short ends of your bands right sides together at a 3/8" seam.



31. Press the seams open then press your fabric in half lengthwise wrong sides touching.



32. Pin the bands to the armholes right sides together aligning the underarm seams.



33. Stitch and finish the raw edges. Press the seam allowance towards

bodice.



Et voilà!

We love seeing what you make! Don't forget to share your pictures and tag

your creations with #FabricsStoreSloanPattern hashtag.



FS ROYAL BLUE Medium Weight Softened 100% Linen

Whether you are looking for natural or bright colors, heavier or lighter linen, we have something for everyone. Browse [our selection of linen fabrics](#) and find the color that inspires you for this project!

CATEGORY

1. FREE PATTERNS
2. TUTORIALS

Category

1. FREE PATTERNS
2. TUTORIALS

Date Created

November 28, 2019

Author

rima-khusainova