



Relaxed Linen Bathrobe Tutorial and Free Pattern

Description







Wrap yourself in softness with our beautiful waffle weave linen bathrobe. Lightweight and soft against your skin, this cozy bathrobe features a kimono collar, two generously sized patch pockets and a belt.

Very absorbent and comfortable, this kimono style linen robe is ideal for bath, lounging at home, pool, vacation, gym... Well, everything! And the best thing is that it is unisex and would fit both men and women. So, pamper yourself with one, or give it as a gift.

Such a great At-Home Essential that is surprisingly easy to sew and a pure pleasure to own!

Materials



We used 3 yards of Medium Honeycomb weave, but you can use any of our [Heavier Honeycomb Linens](#)

Matching sewing thread

Tools



Pattern paper, scissors, ruler, pins, marker or chalk, pen, measuring tape, seam ripper, sewing machine

Difficulty

Beginner

Time

3-4 hours

Pattern

You can access the pattern by following this link [HERE](#). Remember to add seam allowances as indicated in the pattern.

Please note that this bathrobe is intentionally oversized so it fits a wide range of sizes. If you need a larger size, we'd recommend adding a couple of inches to the sides of the front and back panels and some extra length to the hem and sleeves. If you need help grading your pattern, please follow [this tutorial](#).

Cutting Instructions

Cut the back piece and the sleeves on fold, two front pieces that are mirror images to each other, two patch pockets, two 4.5" wide and 50" long strips of fabric for the collar, two belt loops 1.5" wide and 3.25" tall and one 4" x 60" rectangle for the belt. Follow the instructions in the diagram for the seam allowances that need to be added.

Steps

Note: Prewash your fabric and tumble dry it until it is still slightly moist, dry at room temperature. Iron the fabric so it is easier to work with.

1. First of all, you need to attach the patch pockets to the two center fronts of your bathrobe. Follow this detailed tutorial [HERE](#) on how to sew patch pockets and place them on each front side at the desired location (place the front bodice pieces against your body and mark the spot where you want your pockets to sit).

The top fold should be 1" tall, so fold your 1.5" seam allowance twice (3/8" and then 1") to the wrong side and topstitch.



2. Now that you've attached the pockets, you can pin the front and the back pieces right sides together at the shoulder seams.



3. Sew at a $\frac{3}{8}$ " (1 cm) seam allowance, then trim the raw edges down to

1/4" (6 mm) and finish the raw edges with a serger or a zigzag stitch (both raw edges together) to prevent the fabric from fraying in the future. Press the seam allowance to one side (ideally, the back of your bathrobe).



4. Fold your sleeves in half lengthwise and pinch in the middle of the upper

seam to mark the center.



5. Match the center of your sleeve to the shoulder seam and pin the sleeve to the bodice right sides together.



6. Sew at a $\frac{3}{8}$ " (1 cm) seam allowance, then trim the raw edges down to $\frac{1}{4}$ " (6 mm) and finish the raw edges with a serger or a zigzag stitch (both raw edges together). Press the seam allowance towards the sleeve.



7. Pin the underarm and the side seams right sides together.

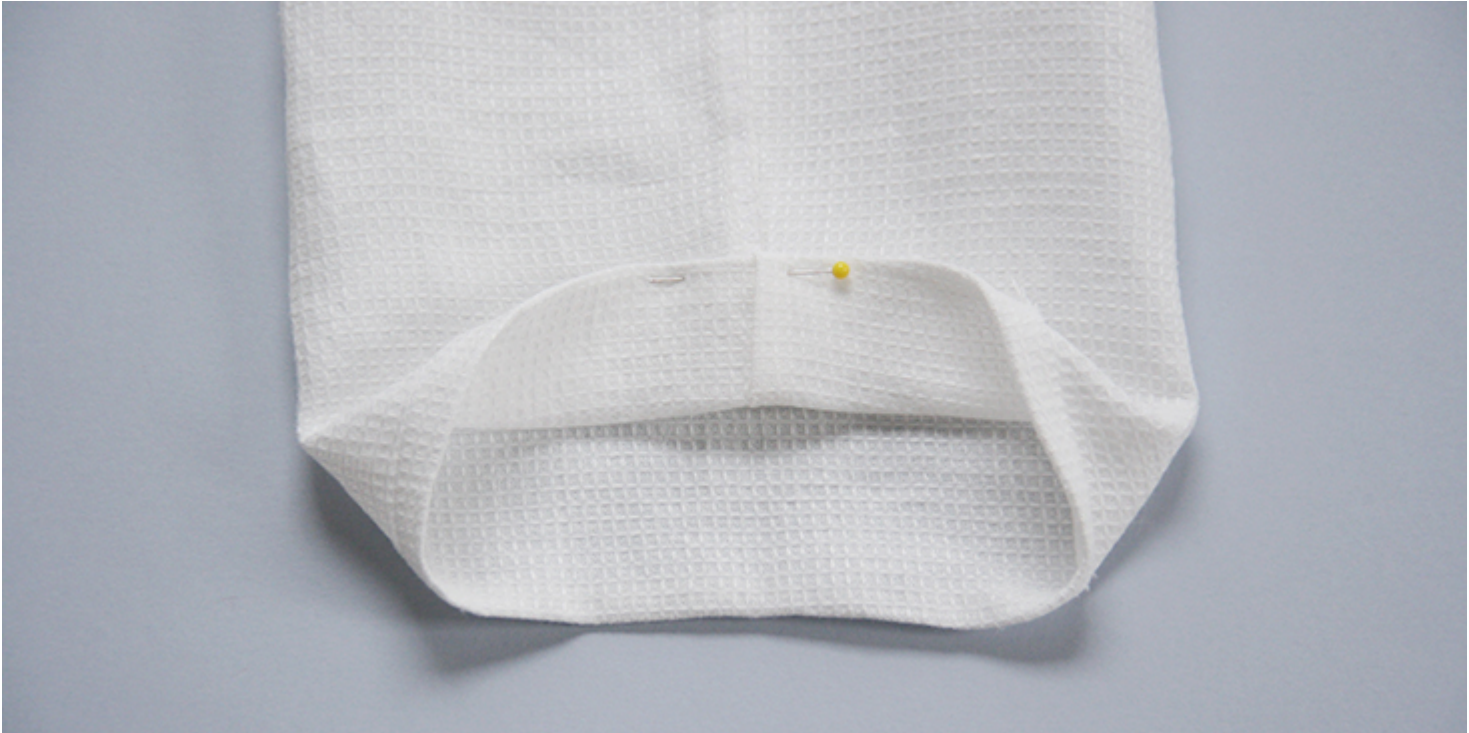


8. Sew the pinned edges at a $\frac{3}{8}$ " (1 cm) seam allowance all in one seam, then trim, serge/zigzag and press to one side.



9. Finish the sleeve openings with a rolled hem: press your fabric twice to the

wrong side: first $\frac{3}{8}$, and then another $1,5\text{Å}$. Pin.



10. Sew as close to the inner folded edge as possible and remember to backstitch. Press when you're done.



11. Finish the bottom hem with a rolled hem again. 3/8" to 1".

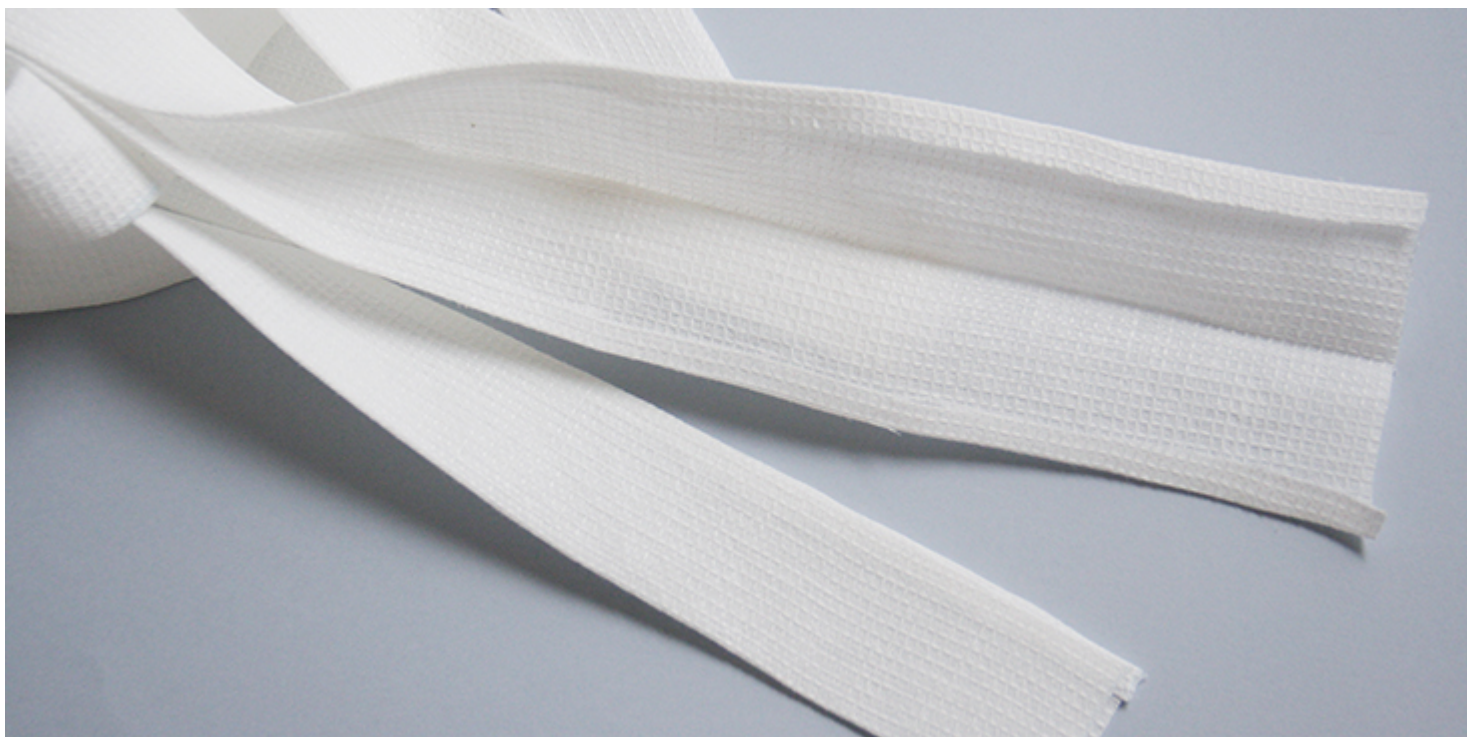


Your main bodice is now complete and it's time to sew and attach the collar.

12. Pin and sew the two collar band's short edges together. Press the seam allowances open.



13. Press the long raw edges $\frac{3}{8}$ " to the wrong and then press the band in half.



14. Match the collar's center seam to the center back of your bathrobe and

start pinning one folded seam allowance to the left and to the right of the bathrobe aligning the raw edges.



15. Using your fabric marker, mark the spots where the collar band ends meet the rolled hem of your jacket. Unpin the ends a little and sew the short edges right sides together. Cut the excess fabric, finger press the seam allowance open and pin back to the bodice.



16. Stitch around the entire front opening in the inner crease of the collar band. Trim the seam allowance down to $\frac{1}{4}$ ".



17. Press the collar band away from the bathrobe.



18. Turn the collar band to the other side of the bathrobe. Pin it in place making sure that that you cover the line of stitching as you go.



19. Working from the right side, topstitch the other collar edge in place in the

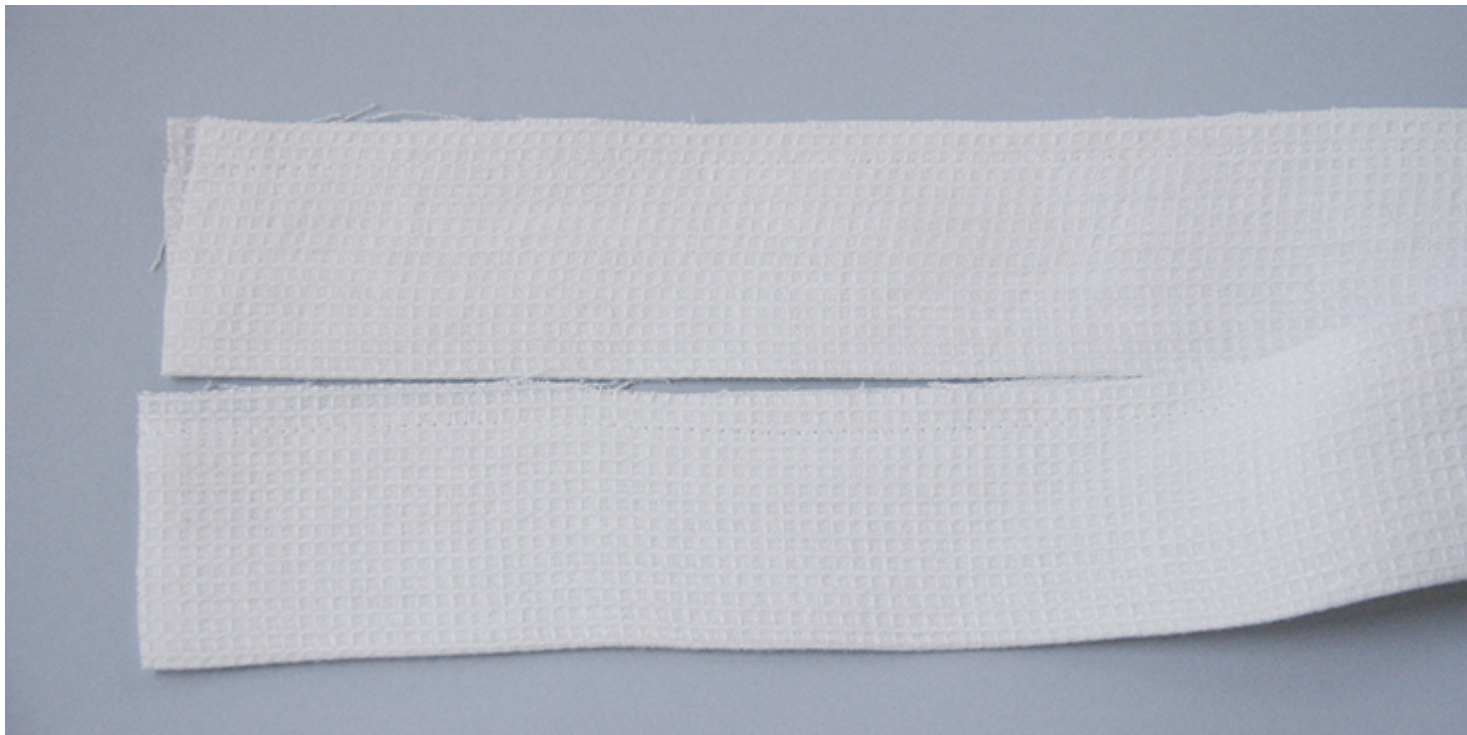
ditch of the existing seam line. Make sure that the back is caught when you sew.



Press the collar one more time and you are done! Time to sew the belt and attach the belt loops.

20. Press your belt fabric in half lengthwise (wrong side facing you) and sew the long raw edges together at a $\frac{3}{8}$ " (1 cm) seam allowance.



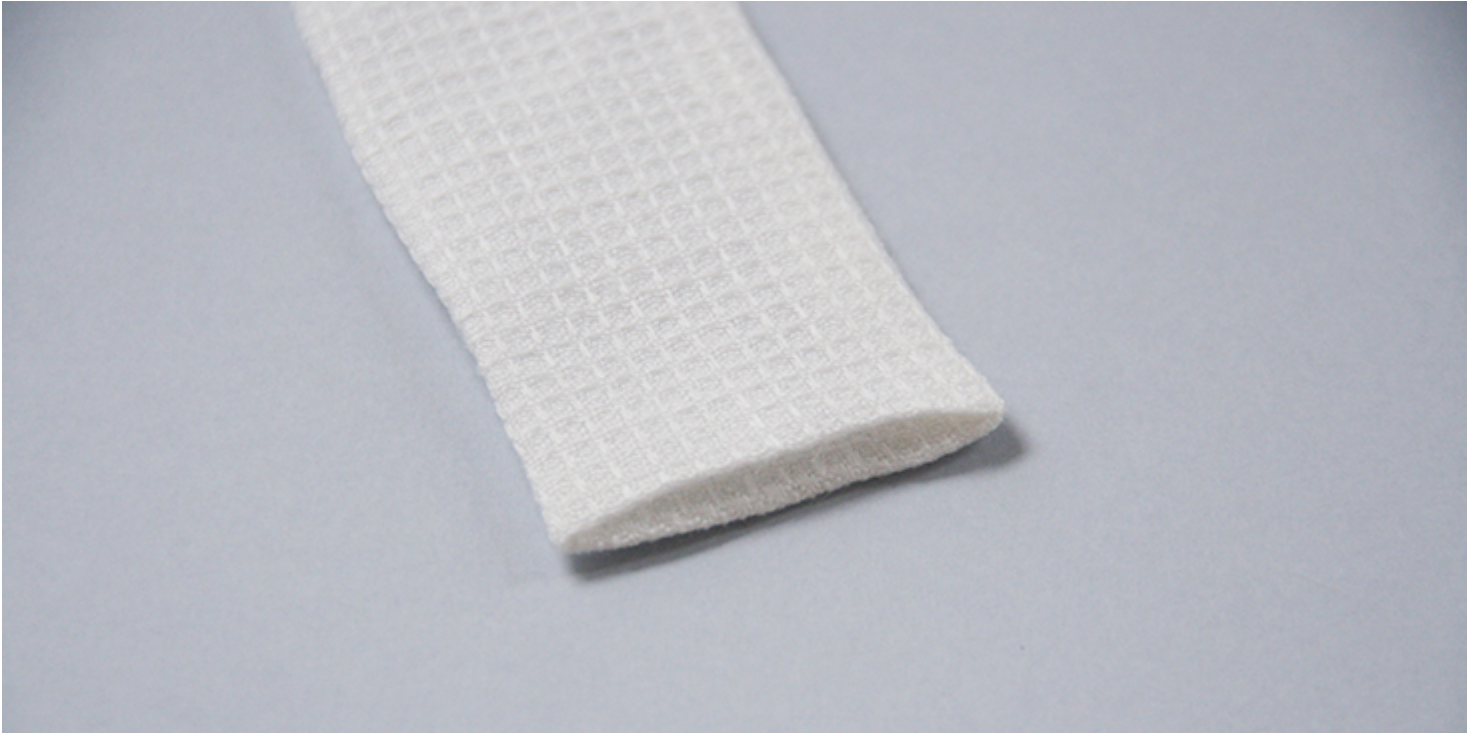


21. Turn the belt right side out through the hole and press again.



22. Tuck in the short ends raw edges and topstitch around all the edges (1/4" (6 mm) from the edge) to close the openings and make sure that the

belt doesn't shift in the future.



23. Lastly, sew and attach the button loops to the side seams at the waist(try on your bathrobe and decide where you want your belt loops to sit)following [this detailed tutorial](#).



Et voila! Pamper yourself every time you step out of the shower by wrapping yourself with your newly made bathrobe! And the best thing- it will get only softer and cozier after each wash!

Check out our [selection of linen fabrics](#) and see which color inspires you for this beautiful project!

CATEGORY

1. FREE PATTERNS
2. TUTORIALS

Category

1. FREE PATTERNS
2. TUTORIALS

Date Created

September 26, 2017

Author

rima-khusainova