

Linen Bathrobe Tutorial

Description







This week'Â we are going to show you how to make'Â a beautiful robe for you to wear at home. Linen is one of the most comfortable and easy to keep fabric, one of the benefits is that with every wash, the fabric will get softer and softer, so a bathrobe is a great investment in your long term comfort.

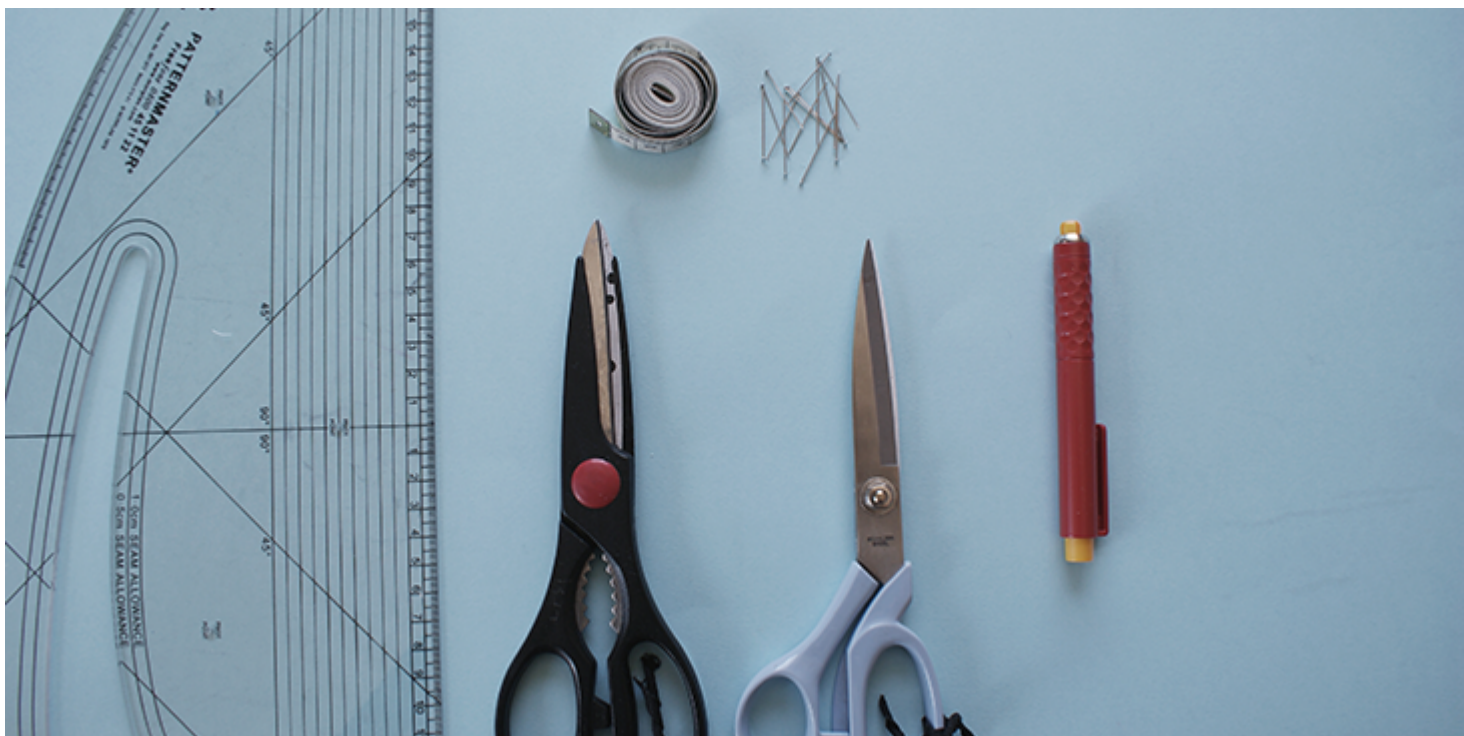
Material

3 yards of [IL019 Pebble Softened](#)
Matching sewing thread



Tools

Pattern master, pattern paper
Paper scissors, fabric scissors
Fabric marker, pins, tape measure



Time

2-3 hours

Difficulty

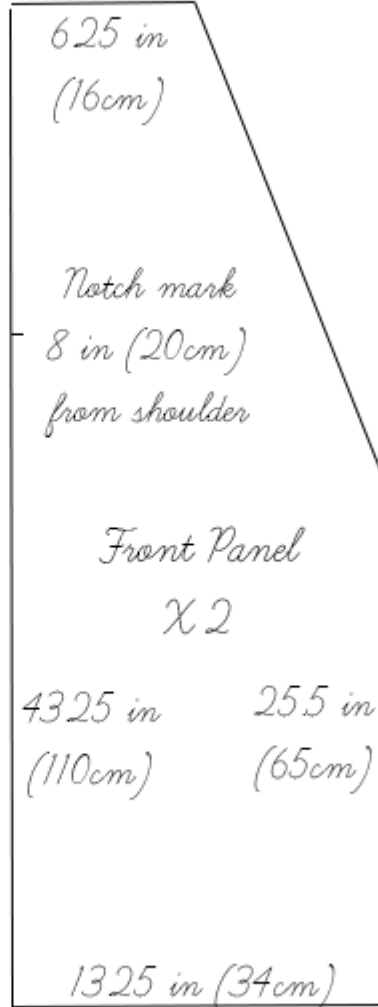
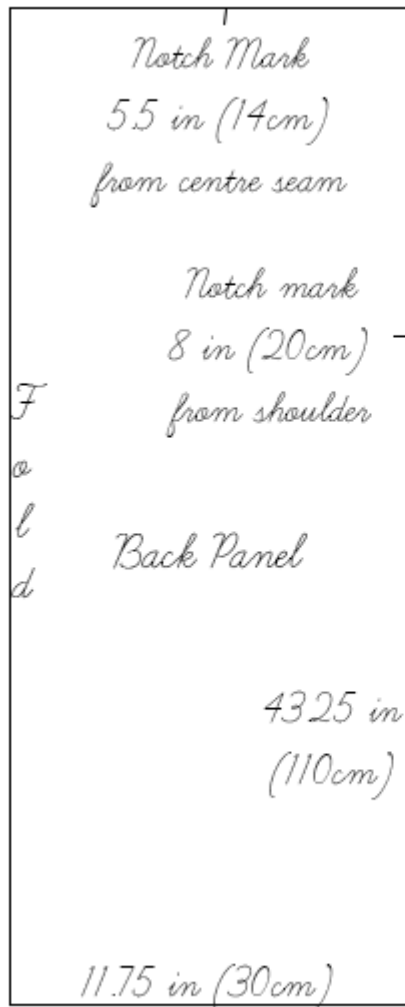
Intermediate

Step

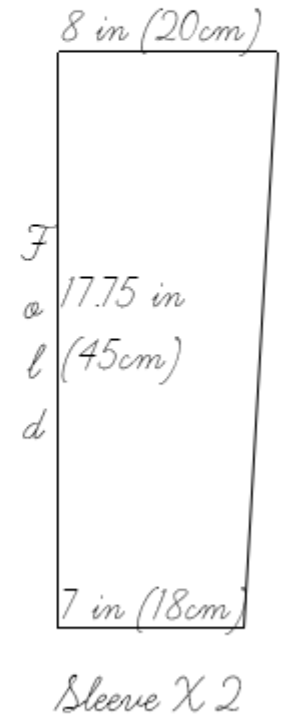
Note: Prewash your fabric and tumble dry it until it is still slightly moist, let this dry in room temperature.

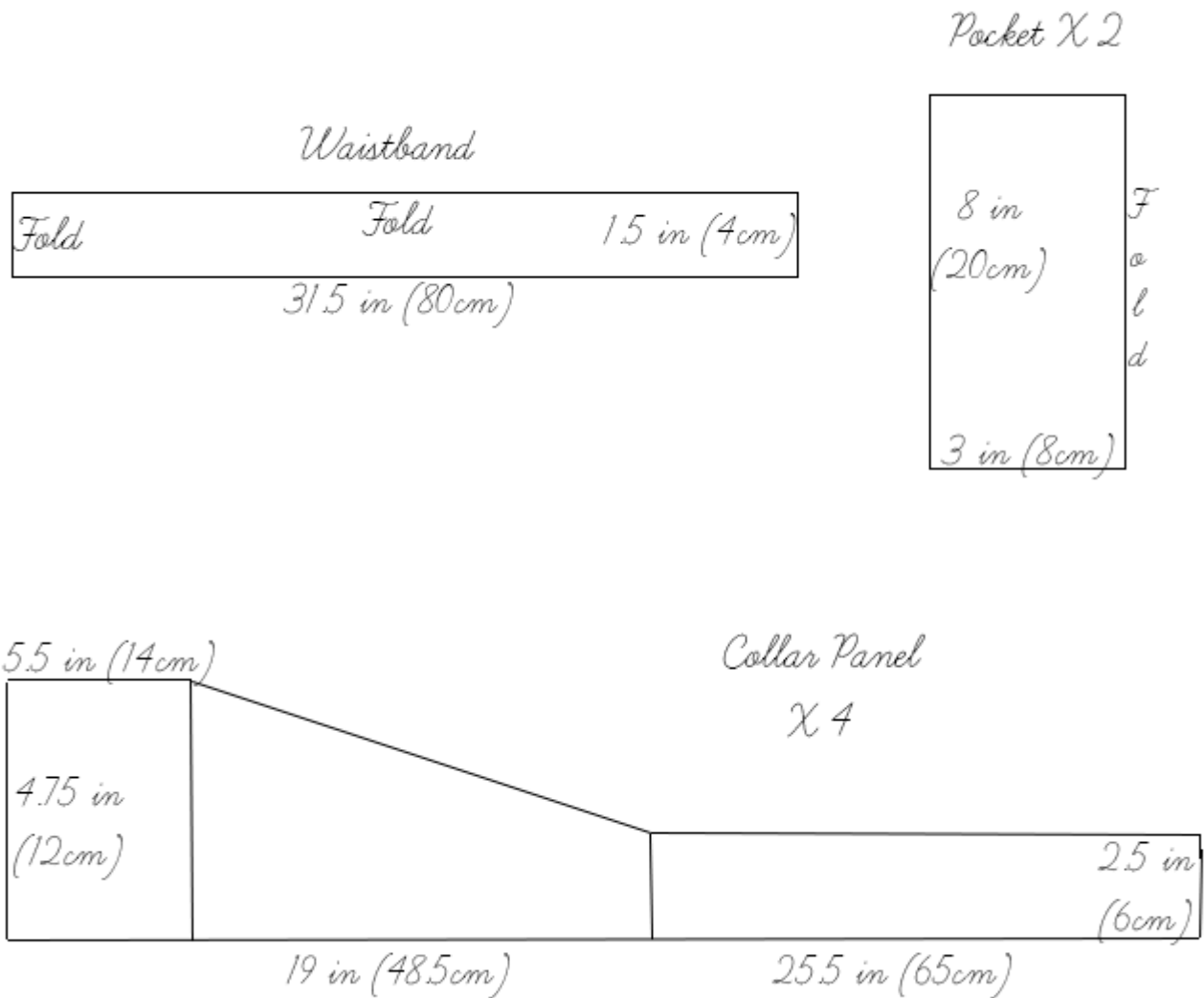
1. Iron the fabric so it is easier to work with
2. The diagram shows the pattern for a size US6-8 (UK10-12).[^] If you need help adjusting the size of this pattern, please follow [this tutorial](#). Add on 3/8 inch (1cm) seam allowance on all seams apart from the ones labelled with

'fold'. It will be useful to notch marked points as well as the centre point of the back panel and sleeve panels.



Bathrobe patterns
Note: Not to scale





3. Use a serger, or choose your own method to protect the seams from fraying. Make sure the method you choose does not add weight to the fabric.
4. Pin the shoulder seams of the front and back panels together. Sew along the seam allowance and press open.



5. Place the top edge of the sleeve panel along the side seams of the front and back panels. Make sure the newly sewn shoulder seam aligns with the centre point of the sleeve. Leaving $\frac{3}{8}$ inch (1cm) space from the sleeve edge, start sewing and stop with $\frac{3}{8}$ inch (1cm) space still to spare. Press open the seams.



6. With the wrong side of the bathrobe facing outwards, pin the side seams of the front and back panels together, along with seams of both sleeves. Sew along the seam and press open.



7. Press the 3/8 inch (1cm) seam allowance of the pocket panels towards it's wrong side, and top stitch only the top edge.



8. Pin the pocket onto the bathrobe, making sure the placement of the two pockets matches on both sides.



9. Top stitch over the remaining three sides of the pockets onto the robe.



10. Pin the centre seam of the collar panels together. Stitch together and press the seams open.



11. Pin the long straight edge of the collar panels and the short side edge, stitch them together. Press open. Cut the corner to prevent excess material.



12. Along the slanted edge, press $\frac{3}{8}$ inch (1cm) of the seam allowance towards the wrong side of the collar panel.



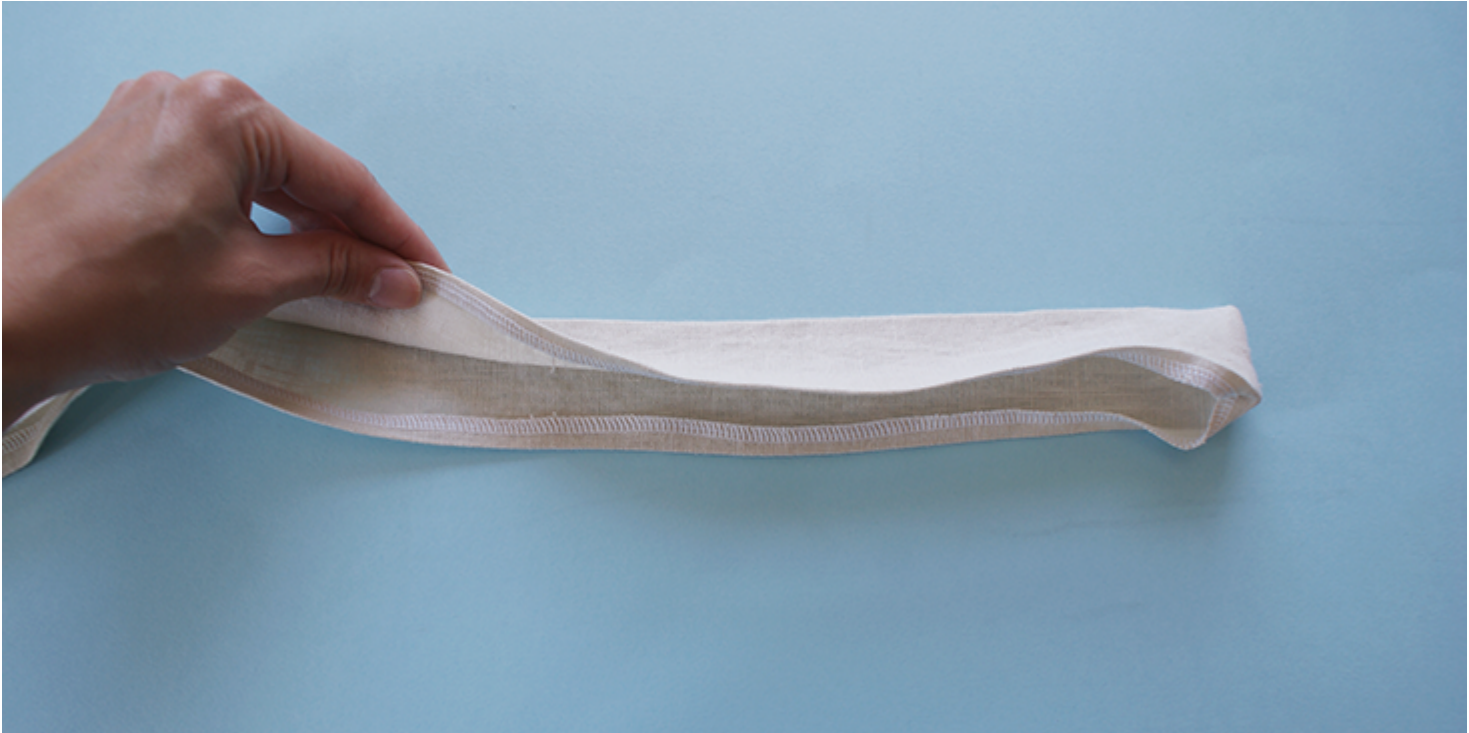
13. Pin the pressed edge of the collar panel along the front and back bodice panel. Sandwich the bodice seam inbetween the collar panel. Make sure the notched back centre mark matches with the stitched collar panel seams. Stitch along the pinned seam.



14. Press $\frac{3}{8}$ inch (1cm) of the robe bottom edge towards its wrong side. Top stitch over this. Do the same for the sleeve panels.



15. For the waist band, press the panel in half, and then towards the wrong side of the band, press $\frac{3}{8}$ inch (1cm). Once you have done this, top stitch over this seam.



Although we chose a neutral colour for this tutorial, why not take a look through our great linen selection and choose the one that takes your fancy?

CATEGORY

1. TUTORIALS

Category

1. TUTORIALS

Date Created

June 29, 2015

Author

cynthia-fong