



Pattern Review: Abbey Sleeveless Cardigan in Midweight Linen

Description



FS Abbey Cardigan made with FS Black Softened Midweight Linen

Everyone loves options. You get so many with the [Abbey pattern set](#): it has 7 pieces. I cannot resist a great collar, so, the cardigan was a perfect choice for me. I was looking for something that could transition the seasons.

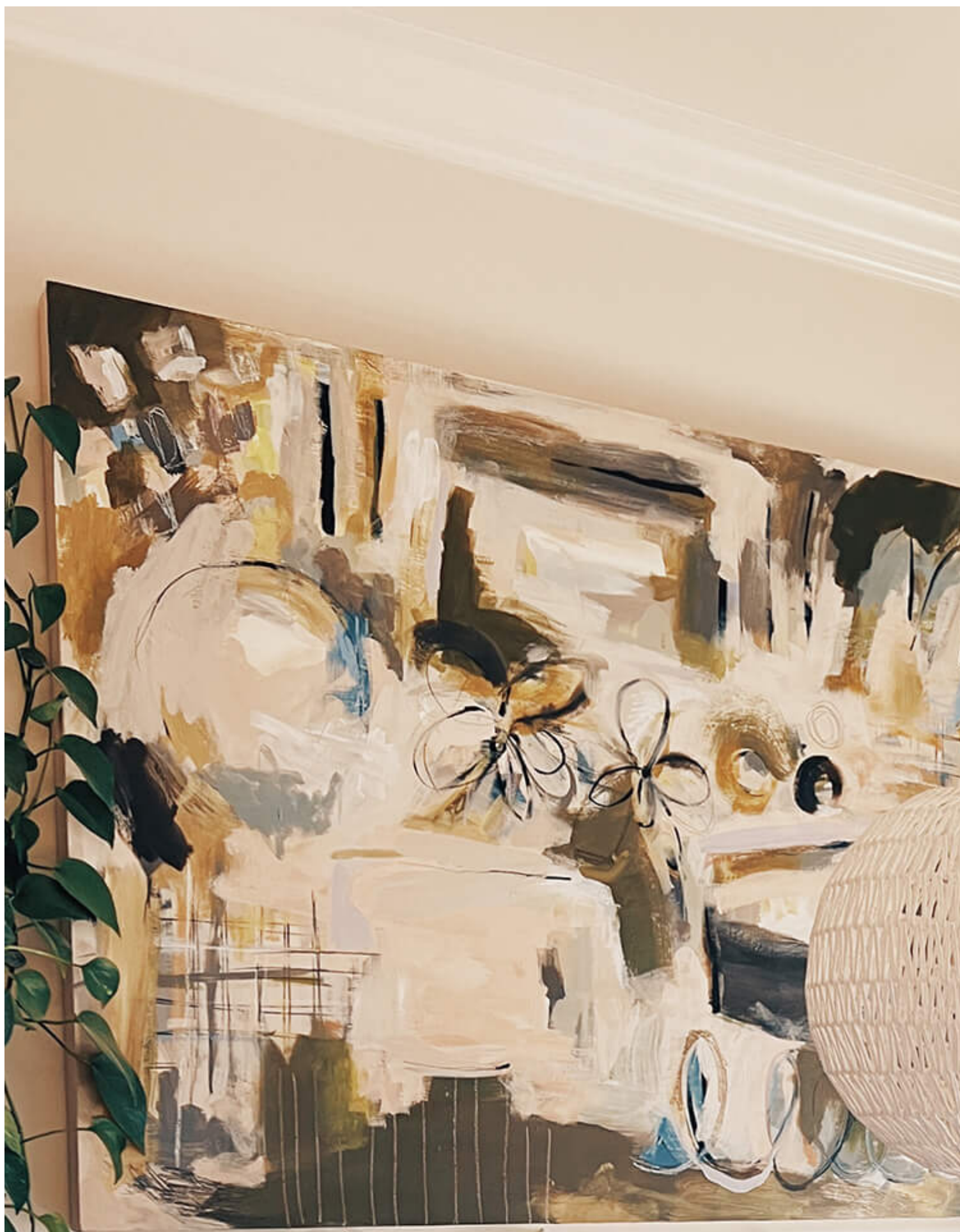
I like the roomy design of the cardigan. The sleeveless option fits the bill for transitional. I see it as the perfect pool to dinner outfit but then also so cute layered with a turtleneck and boots. It would also look great with the pants layered underneath. We love options.



FS Abbey Cardigan made with FS Black Mediumweight Linen

Okay, back to the pattern. I have grown to really love [Fabrics-Store patterns](#). Often, I learn new finishing elements and the end results are always great. For this pattern, I chose to make grade between a 12 in the hips to a 10 in the top. Being a seasoned garment sewist, I feel very comfortable with choosing sizing based on my measurements and the finished garment measurements. However, if you are not as comfortable, Fabrics-Store does offer 1:1 fit and pattern consultation with their in-house pattern maker when you purchase one of their patterns which I think is a very cool feature.

I always start my sewing with reading through all the instructions. Since there are multiple views with the Abbey pattern, I like to go through and circle the sections that I need. It makes it easier for me to focus on the instructions that I need.



The sleeveless cardigan was a breeze to put together. The instructions are detailed. It has lovely incased seams. One thing that I changed, was that I measured the width needed for the bias pieces for the belt and then cut them from smaller pieces. I wanted to be more economical with my fabric. I love details that add something special to a simple cut so I am planning on adding a funky vintage button at the top just under the collar.

This pattern is such a lovely addition to building a memade wardrobe. It has the potential to be a great piece to travel with since you could wear it in so many ways. What would be the first way that you would wear the Abbey Sleeveless cardigan?

CATEGORY

1. COMMUNITY
2. PATTERN REVIEWS

Category

1. COMMUNITY
2. PATTERN REVIEWS

Date Created

December 21, 2023

Author

siri-nordlund