

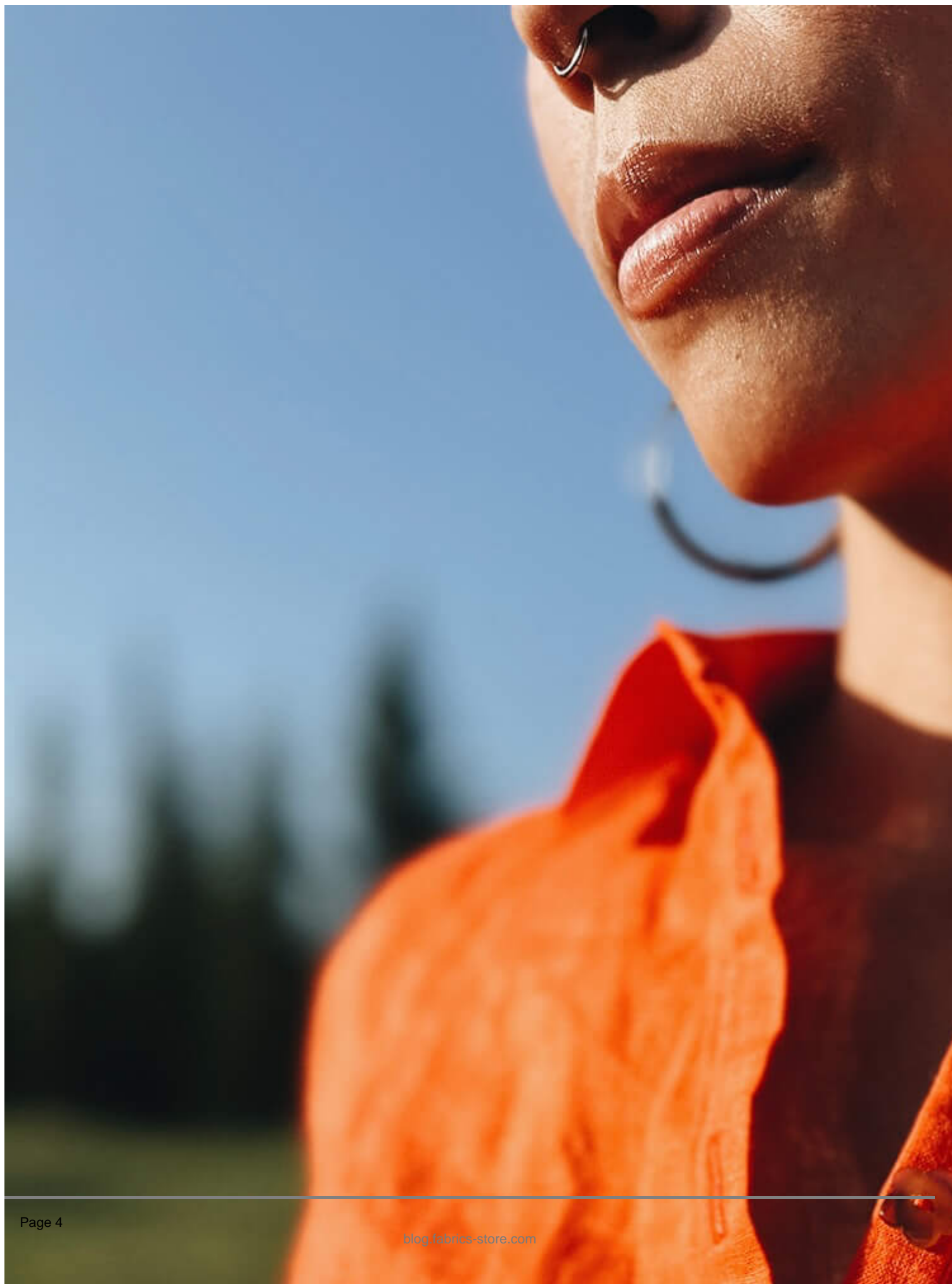


Pattern Review: Slightly Modified Bruna Shirt in Bright Coral Linen

Description



FS Bruna Shirt made with FS Coral Lightweight Linen



FS Bruna Shirt made with FS Coral Lightweight Linen

I have been a long-time fan of button-up shirts because of their versatility: short sleeve, long sleeve, long sleeves rolled up halfway, no sleeves! And lately I've noticed half-placket tops floating around the virtual sewing community world, so I decided to try it out with the [Bruna Shirt pattern](#). I love the idea of having the feature of a button placket without actually having to button the entire placket, so this pattern was the perfect one to try out!



The smallest size offered on the size chart (size 2) offers a generous amount of ease for me (~11") so I went with size 2 & anticipated the extra ease for added comfort value. I decided to make the shirt with [IL020 Handkerchief Coral Softened linen](#) because I wanted a top that was a bit more breezy and lightweight so that it can be used as a quick cover-up on beach/lake days and as a light blouse on indoor/work days.



FS Bruna Shirt made with FS Coral Lightweight Linen

I particularly appreciated the partial button placket construction steps. I usually struggle with these types of features on garments as they tend to confuse me and I almost always attach something backwards or upside down, but combined with the helpful illustrations in the pattern guide, I didn't seam rip once and managed to get the placket on correctly on the first try. After this celebratory placket insertion, I naturally wanted to keep the good vibes going and pulled out some very cute buttons from the shop "Pigeon Wishes" that I had been holding on to for years; I felt like this shirt was the perfect top to add a little floral detail to it.



FS Bruna Shirt made with FS Coral Lightweight Linen

During the construction of this shirt, I decided to make a couple of modifications because I can't help but improvise and add a little bit of spontaneity to my makes. I decided to curve the collar point edges for a subtle [peter pan collar](#) look and [curved the bottom hem](#) (omitting the facings and simply rolling the hem up) because I was on a curvy kick!



FS Bruna Shirt made with FS Coral Lightweight Linen

Overall, I'm very pleased with this shirt and definitely see a few more variations in my future by switching up the collar shape again and shortening the button placket and/or removing the buttons altogether and having a bare placket next time.

CATEGORY

1. COMMUNITY
2. PATTERN REVIEWS

Category

1. COMMUNITY
2. PATTERN REVIEWS

Date Created

October 5, 2023

Author

leila-knoll